

# SAFETY TOKYO BAY

For safe navigation  
of heavily trafficked  
Tokyo Bay

Before entering Tokyo Bay, you should fully understand the traffic rules of the bay, the conditions in the bay, and other important information from this booklet and other materials.

## Observe the maritime traffic rules in the sea area where navigation rules are designated.

Routes are designated based on the Maritime Traffic Safety Act for the sea area near the Tokyo Offing Light Buoy, the sea area near the Tokyo Bay Aqua Line East Fairway, the sea area near Kisarazu Port Offing Light Beacon, the sea area on the west side of Nakanose, and the sea area at the entrance to Tokyo Bay.

## Be sure to listen to VHF CH16 and CH13.

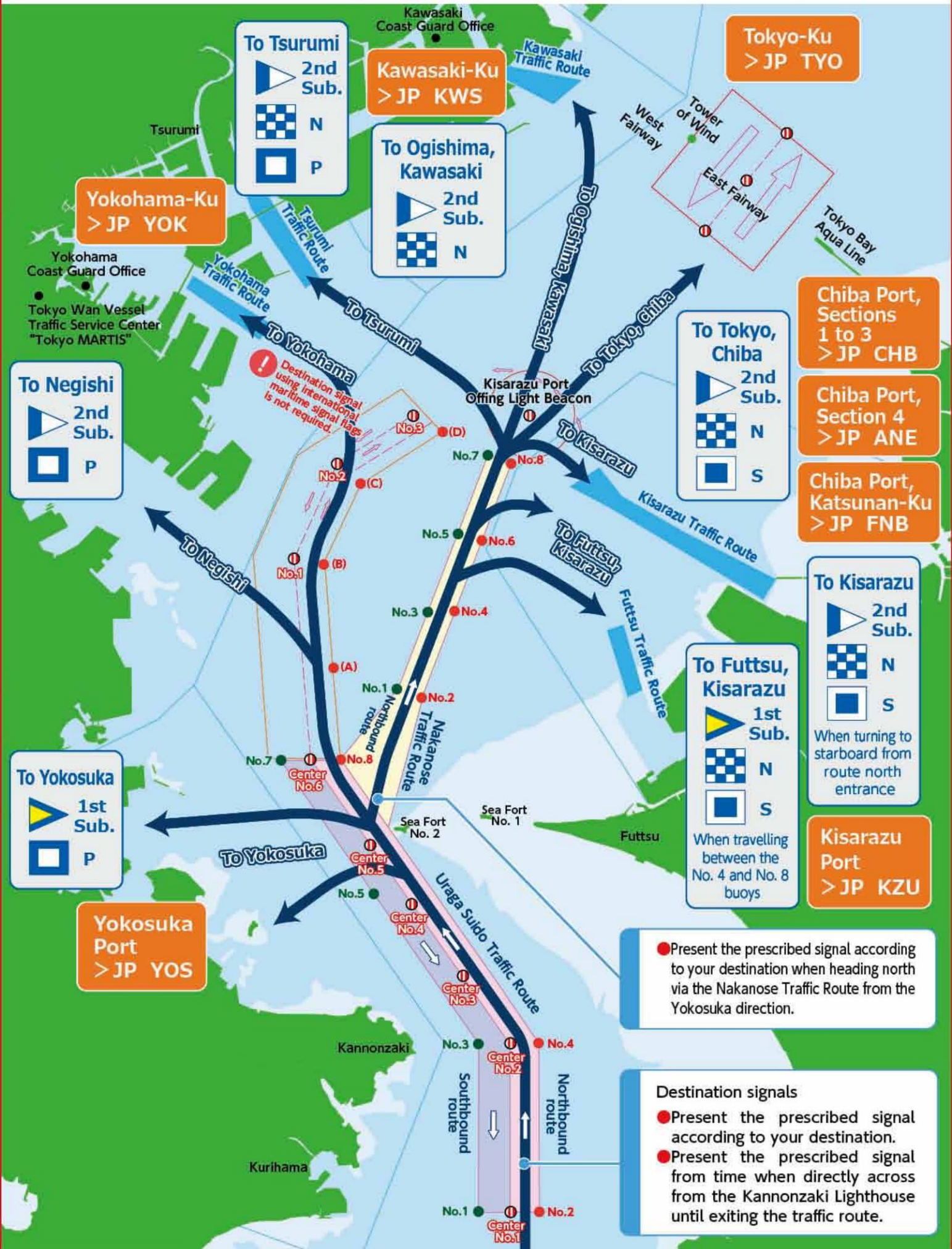
The Tokyo Wan Vessel Traffic Service Center provides safety and other information related to maritime traffic in Tokyo Bay by VHF and other means.

## Check the following before entering Tokyo Bay.

Prepare a destination signal. Enter the AIS destination information fields. Conform that the information that has already input is correct.

# International maritime signal flags and AIS destination signals when entering Tokyo Bay

\* When inside a harbor or near the harbor boundary, the separate destination signal prescribed in the Act on Port Regulations is required.



**To Tsurumi**

2nd Sub.

N

P

**Kawasaki-Ku**

> JP KWS

**To Ogishima, Kawasaki**

2nd Sub.

N

**Tokyo-Ku**

> JP TYO

**Yokohama-Ku**

> JP YOK

**To Negishi**

2nd Sub.

P

**Chiba Port, Sections 1 to 3**

> JP CHB

**Chiba Port, Section 4**

> JP ANE

**Chiba Port, Katsunan-Ku**

> JP FNB

**To Tokyo, Chiba**

2nd Sub.

N

S

**To Kisarazu**

2nd Sub.

N

S

When turning to starboard from route north entrance

**To Futtsu, Kisarazu**

1st Sub.

N

S

When travelling between the No. 4 and No. 8 buoys

**Kisarazu Port**

> JP KZU

**To Yokosuka**

1st Sub.

P

**Yokosuka Port**

> JP YOS

● Present the prescribed signal according to your destination when heading north via the Nakanose Traffic Route from the Yokosuka direction.

**Destination signals**

● Present the prescribed signal according to your destination.

● Present the prescribed signal from time when directly across from the Kannozaki Lighthouse until exiting the traffic route.

**Navigation in the sea area around Tokyo International Airport**

● Within a circle of radius 1,850 m from the Tokyo Offing Light Buoy, travel with the light buoy on the vessel port side.  
● Do not anchor within this circle.

Vessels with an above-surface height of 28.4 m or more must not enter.

Travel on the north side of the Runway D east light beacon.

● Vessels (except for northbound vessels traveling toward Negishi) must travel with the Nakanose west traffic control light beacons (No. 1 - No. 3) on the vessel port side until reaching the designated route to the destination.

**Legend**

- ← Correct route
- Example of incorrect route
- Ⓢ Virtual AIS Aid to Navigation
- Ⓢ Pilot station

● On the Tokyo Bay Aqua Line East Fairway, travel with the center light beacons (Center No. 1 - No. 3) on the vessel port side.

● When traveling towards the Chiba side, stay as far away from the center light beacons as possible. When traveling towards to Tokyo side, travel as close to the light beacons as possible.

● Do not anchor in the Tokyo Bay Aqua Line East Fairway.

**Within traffic routes designated by the Marine Traffic Safety Act**

- ☐ Vessels with length 50 m or more must travel within the traffic route.
- ☐ Within the traffic route, travel at a surface speed of 12 knots or less.

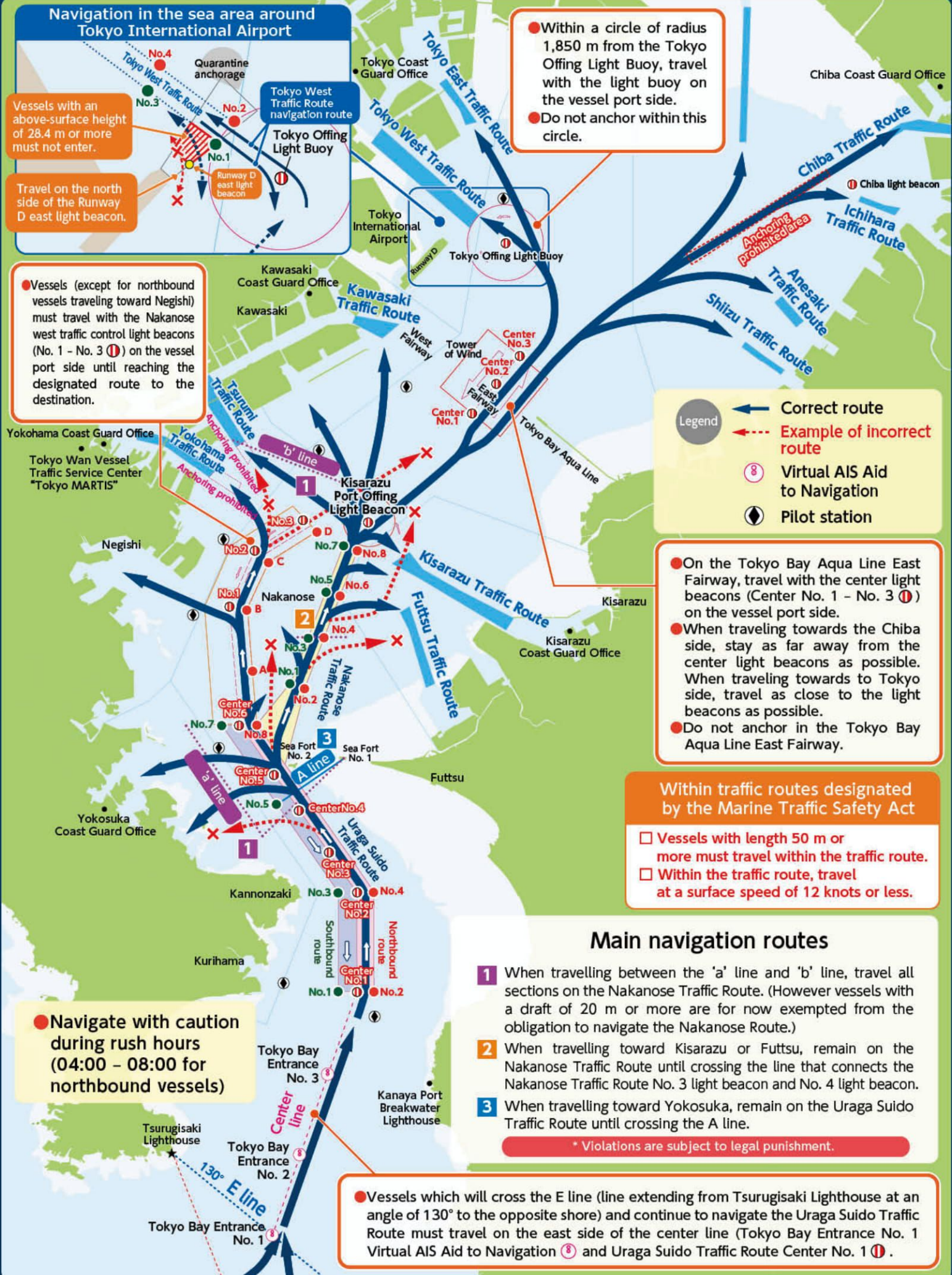
● Navigate with caution during rush hours (04:00 - 08:00 for northbound vessels)

**Main navigation routes**

- 1 When travelling between the 'a' line and 'b' line, travel all sections on the Nakanose Traffic Route. (However vessels with a draft of 20 m or more are for now exempted from the obligation to navigate the Nakanose Route.)
- 2 When travelling toward Kisarazu or Futtsu, remain on the Nakanose Traffic Route until crossing the line that connects the Nakanose Traffic Route No. 3 light beacon and No. 4 light beacon.
- 3 When travelling toward Yokosuka, remain on the Uraga Suido Traffic Route until crossing the A line.

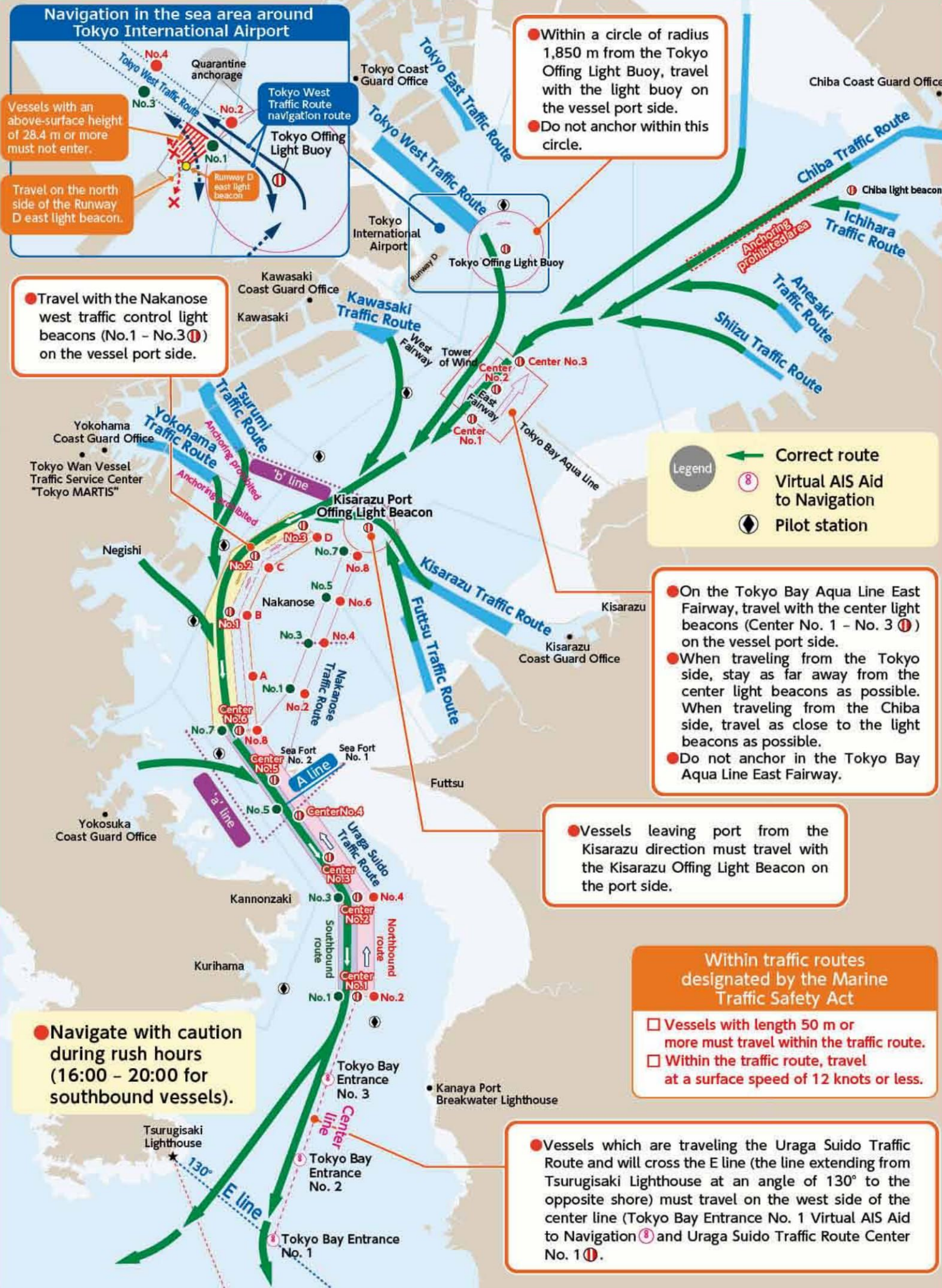
\* Violations are subject to legal punishment.

● Vessels which will cross the E line (line extending from Tsurugisaki Lighthouse at an angle of 130° to the opposite shore) and continue to navigate the Uraga Suido Traffic Route must travel on the east side of the center line (Tokyo Bay Entrance No. 1 Virtual AIS Aid to Navigation Ⓢ and Uraga Suido Traffic Route Center No. 1).



When leaving Tokyo Bay

# Departure Routes and Navigation



**Navigation in the sea area around Tokyo International Airport**

Quarantine anchorage

Tokyo West Traffic Route navigation route

Tokyo Offing Light Buoy

Runway D east light beacon

Travel on the north side of the Runway D east light beacon.

Vessels with an above-surface height of 28.4 m or more must not enter.

● Within a circle of radius 1,850 m from the Tokyo Offing Light Buoy, travel with the light buoy on the vessel port side.

● Do not anchor within this circle.

● Travel with the Nakanose west traffic control light beacons (No.1 - No.3) on the vessel port side.

**Legend**

- ← Correct route
- ⑧ Virtual AIS Aid to Navigation
- ⦿ Pilot station

● On the Tokyo Bay Aqua Line East Fairway, travel with the center light beacons (Center No. 1 - No. 3) on the vessel port side.

● When traveling from the Tokyo side, stay as far away from the center light beacons as possible. When traveling from the Chiba side, travel as close to the light beacons as possible.

● Do not anchor in the Tokyo Bay Aqua Line East Fairway.

● Vessels leaving port from the Kisarazu direction must travel with the Kisarazu Offing Light Beacon on the port side.

● Navigate with caution during rush hours (16:00 - 20:00 for southbound vessels).

**Within traffic routes designated by the Marine Traffic Safety Act**

- Vessels with length 50 m or more must travel within the traffic route.
- Within the traffic route, travel at a surface speed of 12 knots or less.

● Vessels which are traveling the Uraga Suido Traffic Route and will cross the E line (the line extending from Tsurugisaki Lighthouse at an angle of 130° to the opposite shore) must travel on the west side of the center line (Tokyo Bay Entrance No. 1 Virtual AIS Aid to Navigation ⑧ and Uraga Suido Traffic Route Center No. 1).

# Reporting entry

**Subject vessels entering a designated sea area must report their entry** to the Tokyo Wan Vessel Traffic Service Center by VHF radio or other means.

## ● Subject vessels

Vessels with length 50 m or more (excepting vessels with active AIS\*)

- \* Vessels operating simplified AIS are required to report.
- \* Vessels with gross tonnage of 100 tons or more, or a with a maximum number of people on board of 30 or more, are requested to report (excepting vessels with active AIS).

## ● Report items

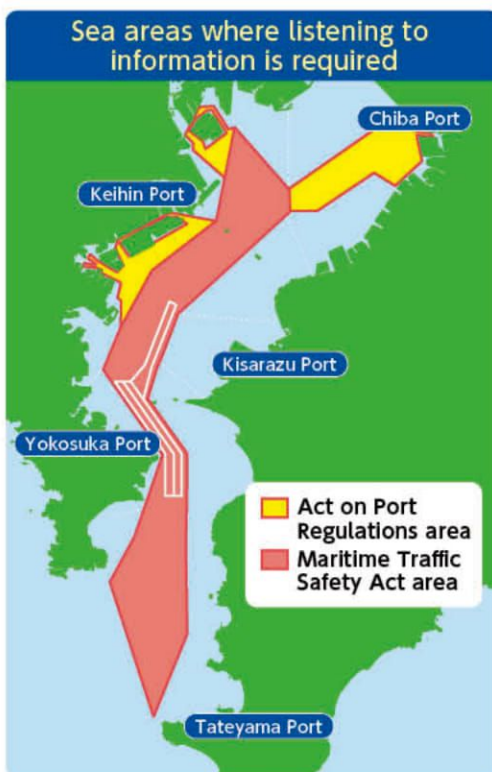
- ① Vessel name
- ② Callsign
- ③ Vessel position at time of reporting
- ④ Destination port (pier, anchorage) if destination port is decided
- ⑤ Vessel length
- ⑥ Vessel draft

## ● Reporting positions

1. Entering the bay  
Tsurugisaki-Sunosaki Line
2. Leaving the bay  
When entering or before entering a designated sea area
  - Close to a well-known landmark at each port
  - If there is no well-known landmark in the area, report north latitude and east longitude.



# Sea area where listening to information is required



In the sea areas shown at left, vessels navigating in Tokyo Bay are **required to listen to the information** provided by VHF radio from the Tokyo Wan Vessel Traffic Service Center.

## ● Vessels required to listen to information

- Vessels with length 50 m or more (sea area covered by the Maritime Traffic Safety Act)
- Vessels with gross tonnage of more than 500 tons (sea area covered by the Act on Port Regulations)

## ● Information provision, etc.

- The Tokyo Wan Vessel Traffic Service Center provides information and recommendations to support safe navigation in the sea areas where listening to information is required.

## Important points for navigation

Crossings between vessels travelling toward the Tokyo West Traffic Route and southbound vessels from the Tokyo East Traffic Route

Crossings between vessels travelling toward Tokyo from the Tokyo Bay Aqua Line East Fairway and southbound vessels from the Chiba direction

Crossings between outbound vessels from the Nakanose Traffic Route and vessels leaving port from the Kisarazu direction

Crossings between vessels travelling toward Negishi, Yokohama, Tsurumi, or Kawasaki direction and southbound vessels

Crossings between vessels travelling toward Yokosuka direction and southbound traffic route vessels

Crossings between vessels entering or leaving the traffic route and crossing vessels (ferries)

Crossings between vessels travelling toward Sunosaki direction after leaving the traffic route and vessels travelling toward the Uraga Suido Traffic Route from the Izu Oshima direction

Crossings between vessels travelling toward Tateyama direction after leaving the traffic route and vessels travelling toward the Uraga Suido Traffic Route from the Izu Oshima direction or Sunosaki direction



## Preparation of nautical charts

Vessels entering or leaving port in Tokyo Bay must prepare the most recent nautical charts of Tokyo Bay and utilize them correctly. (Nautical charts must be updated based on Notices to Mariners.)

Tokyo Bay nautical charts		Harbor charts			
Tokyo Wan	W90(JP90)	Keihin Ko Tokyo	W1065(JP1065)	Middle Part of Chiba Ko	W1086(JP1086)
Northern Part of Tokyo Wan	W1061(JP1061)	Keihin Ko Yokohama	W66(JP66)	Southern Part of Chiba Ko	W1087(JP1087)
Middle Part of Tokyo Wan	W1062(JP1062)	Keihin Ko Kawasaki	W67(JP67)	Chiba Ko Katsuman	W1088(JP1088)
Uraga Suido	W1081(JP1081)	Keihin Ko Negishi	W1085(JP1085)	Kisarazu Ko	W1067(JP1067)
		Yokosuka Ko	W1083(JP1083)		

\* W Indicates World Geodetic System.  
\* JP Indicates nautical charts printed in English.

## Contact information for related offices

Office name	TEL	FAX	Office name	TEL	FAX
Tokyo Coast Guard Office	03-5564-2022	03-3599-0922	Kawasaki Coast Guard Office	044-266-0118	044-266-1613
Chiba Coast Guard Office	043-242-1805	043-245-3627	Yokosuka Coast Guard Office	046-861-8374	046-861-8379
Yokohama Coast Guard Office	045-201-1671	045-211-2405	Kisarazu Coast Guard Office	0438-30-0118	0438-30-0120
Tokyo Wan Vessel Traffic Service Center	TEL 045-225-9118		<a href="https://www6.kaiho.mlit.go.jp/tokyowan/">https://www6.kaiho.mlit.go.jp/tokyowan/</a>		

## Maritime Information and Communication System

### ● PC site

<https://www.kaiho.mlit.go.jp/info/mics/>



### ● Smartphone site

<https://www6.kaiho.mlit.go.jp/sp/index.html>



Supervised by Maritime Traffic Department,  
3rd Regional Coast Guard Headquarters

TEL 045-211-1118(operator) FAX 045-226-1696 URL <https://www.kaiho.mlit.go.jp/03kanku/>

Issued by Tokyo Wan Association for Marine Safety

TEL 045-212-1817 FAX 045-212-5591 URL <http://www.toukaibou.or.jp/>

Date Issued: March 1, 2019