

NOTICE OF CONSTRUCTION WORK OF SHINHONMOKU PIER

Keihin Port Office, Kanto Regional Development Bureau, Ministry of Land, Infrastructure, Transport and Tourism TEL 045-226-3750
 City of Yokohama Port and Harbor Bureau Second Construction Division TEL 045-671-2897
 Shinhomoku Navigation Safety Management Office TEL 045-625-1441

● The construction of the Shinhomoku Pier will be carried continued in the area in the Yokohama 2nd and 5th Hommoku marine area of Keihin port and construction vessels will be frequently entering and leaving the construction area (No berthing).

● Please take caution when navigating in nearby marine area.

1. Outline of Construction Work

(1) Phase 1

The solidification of ground foundation work, caisson installation (filling), and landfill are performed associated with the seawall construction work.

(2) Phase 2

The solidification of ground, foundation work, caisson installation (filling), and steelplate cell installation are performed associated with the quay and seawall construction.

Phase	Construction	PROGRESS														
		2020	2021	2022	2023	2024	2025	2026	2027	2028	2029	2030	2031			
Phase 1	Seawall															
	Partition weir															
	Landfill															
	Quay side															
Phase 2	Seawall															
	Partition weir															
	Landfill															
	Breakwater															

2. Period of establishment of Construction area (No berthing)

◎ Period: May 15, 2020 (on going) – for the time being

◎ Area : Area: The sea area surrounded by the connecting points

A,B,C,D,E,F,G, and H in Figure 2 and the shoreline.
 (In addition, navigation and anchorage of general vessels are prohibited in the construction area by the public notice of Keihin Harbor Master)

Point	Latitude	Longitude	Remarks
A	35° 26' 24"	139° 41' 21"	On revetment
B	35° 26' 31"	139° 41' 28"	
C	35° 26' 10"	139° 42' 00"	
D	35° 25' 21"	139° 42' 17"	
E	35° 25' 12"	139° 41' 39"	
F	35° 25' 13"	139° 41' 31"	
G	35° 25' 52"	139° 41' 17"	
H	35° 25' 53"	139° 41' 14"	On revetment

3. Safety Measures

- (1) During the construction period, 6 or more patrol boats will be deployed from 6:00 to 19:00, and 4 or more patrol boats from 19:00 to 6:00. If night work is to be carried out, a guard boat will be deployed as in the daytime.
- (2) When a construction vessel entering or exiting the construction area, the patrol boat may raise a warning to ensure safe passage of vessels. They may also request cooperation to nearby vessels. (See Fig. 2 Construction Area)
- (3) In order to clearly indicate the seawall, a floating light for indicating the construction area and a sign lamp for indicating the seawall are installed as shown in Figure 3 and flashing synchronously.
- (4) The work vessel is moored in the construction area at night. If construction is conducted at night, navigation lighting is provided.
- (5) Shinhomoku Navigation Safety Management Office will perform the following operations:
 - Monitor the construction area
 - Provision of construction information (i.e. via international VHF) to general vessels
 - Provision of information on the movement of general vessels, etc. to construction vessels and patrol boats, altering, etc.

Fig. 3 Construction Area Indication Sign Lamp [Floating Lights/Beacon Lights]											
◇ TYPE A			◇ TYPE A (○)			● TYPE B			⊕ Light Post (on land)		
Light Quality	4sec 1 flash	Light height approx. 3.9 m	Light Quality	4sec 1 flash	Light height approx. 3.9m	Light Quality	4sec 1 flash	Light height approx. 3.0m	Light Quality	4sec 1 flash	Light height approx. 2.4m
Light Color	Yellow	Body color Yellow	Light Color	Yellow	Body color Yellow	Light Color	Yellow	Body color Yellow	Light Color	Yellow	Body color Yellow
Intensity	Approx. 14cd	Top mark "X"	Intensity	Approx. 5cd	Top mark "X"	Intensity	Approx. 14cd	Top mark "X"	Intensity	Approx. 14cd	Top mark -
Light Distance	Approx. 5.5km	Synchronous Flashing Device	Light Distance	Approx. 8.3km	Synchronous Flashing Device	Light Distance	Approx. 5.5km	Synchronous Flashing Device	Light Distance	Approx. 5.5km	Synchronous Flashing Device

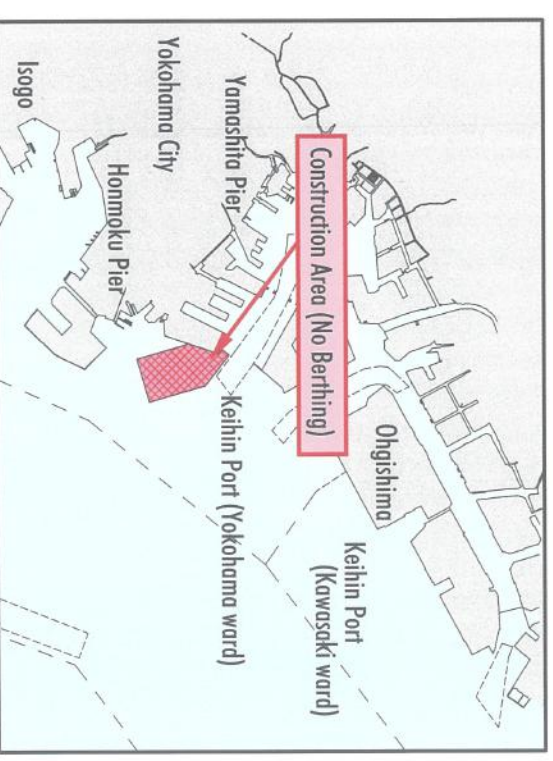


Fig. 1 Vicinity Map

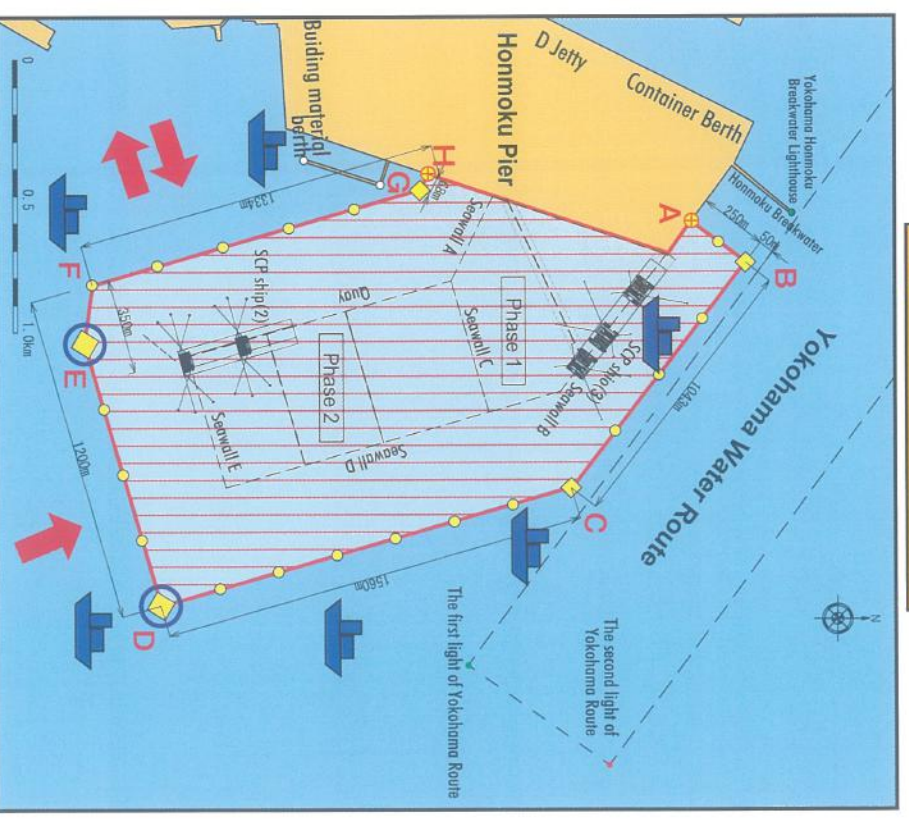


Fig. 2 Construction Area

※ The patrol boat will be in an appropriate position.

Fig. 4 Patrol Boat

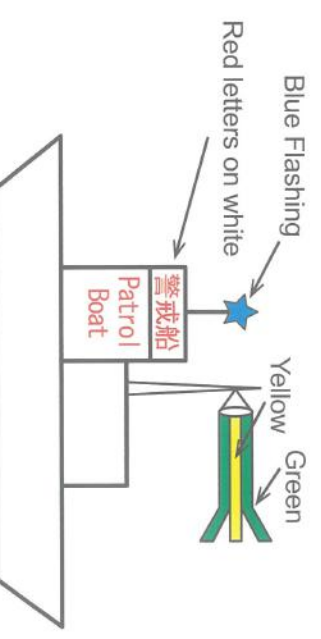


Fig. 5 Flag Sign

